

ARROL & SNELL LTD

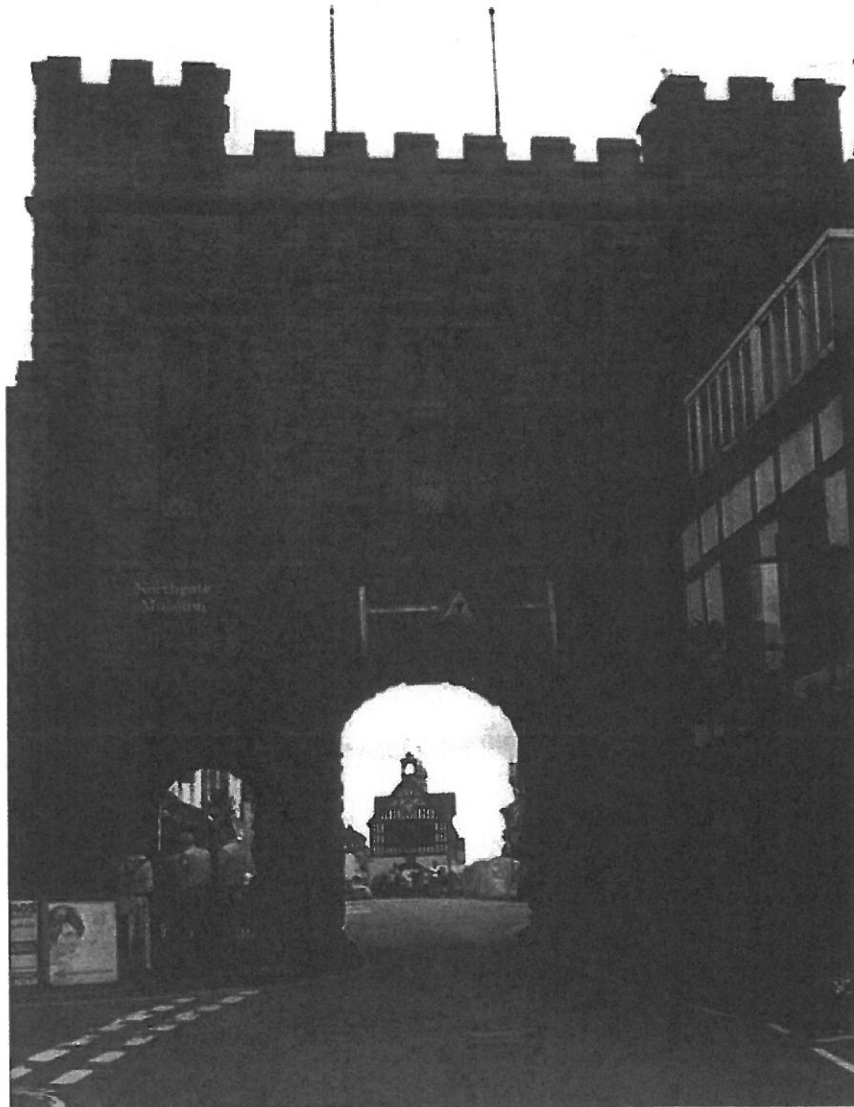
ARCHITECTS, SURVEYORS, PLANNING & CONSERVATION CONSULTANTS

ST. MARY'S HALL, ST. MARY'S COURT,
SHREWSBURY, SY1 1EG
TEL: (01743) 241111
www.arrolandsnell.co.uk
E-MAIL: admin@arrolandsnell.co.uk

APPENDIX O

NORTHGATE MUSEUM & ARCH, BRIDGNORTH, SHROPSHIRE

RE-ROOFING, ASSOCIATED WORKS AND NEW SUSPENDED CEILING



OUTLINE BUDGET COSTS DECEMBER 2017

	Item	No.	£	p
1.	Carefully remove and set on one side flag poles.		144	00
2.	Take up existing roof coverings and substrate, including perimeter flashings etc. Approximate square meterage: 52.5m ²		222	00
3.	Lay single ply membrane flat roof system on new substrate with insulation including perimeter upstands and flashing.		6,912	00
4.	Allow for access walkway fibre glass grid on spacers. Approximately 20m ² .		845	00
5.	Reinstall flag poles with new plated connections to parapet wall on support pads.		896	00
6.	Allow for replacing lead abutment gutter at the west end including timber supports, boarding and localised roof repairs. Approximately 300mm wide and tapering x 6.5m long.		2,029	00
7.	Allow for localised re-pointing at parapet level in lime mortar. Rake out existing loose sand/ cement mortar and re-point in lime mortar. Approximately 5m ² .		400	00
8.	Provide new floor to attic for maintenance/ inspection 72x170mm joists on hangers between trusses 19x94mm softwood boards.		3,798	00
9.	Allow for new proprietary access hatch.		600	00
10.	Low level re-pointing to main arch 2 x 1m high x 6m.		960	00
Internal Works				
1.	It is assumed that the majority of the artefacts in the museum are to be removed. Allow for protection to remaining benches and display cabinets.		150	00
2.	Disconnect existing electrics and make safe. Remove and dispose of light fittings.		130	00
3.	Supply and fix new suspended ceiling.		2,740	00
4.	Allow for new lighting. PS £5,000.00		5,000	00
	Sub-total		24,826	00
<i>Provisional Sums</i>				
Contingency 10%			2,482	60
Preliminaries 20%			5,461	72
Preliminaries including for access scaffold tower on the north east side and scaffold pole guarding to crenels.				
	Total		£ 32,770	32